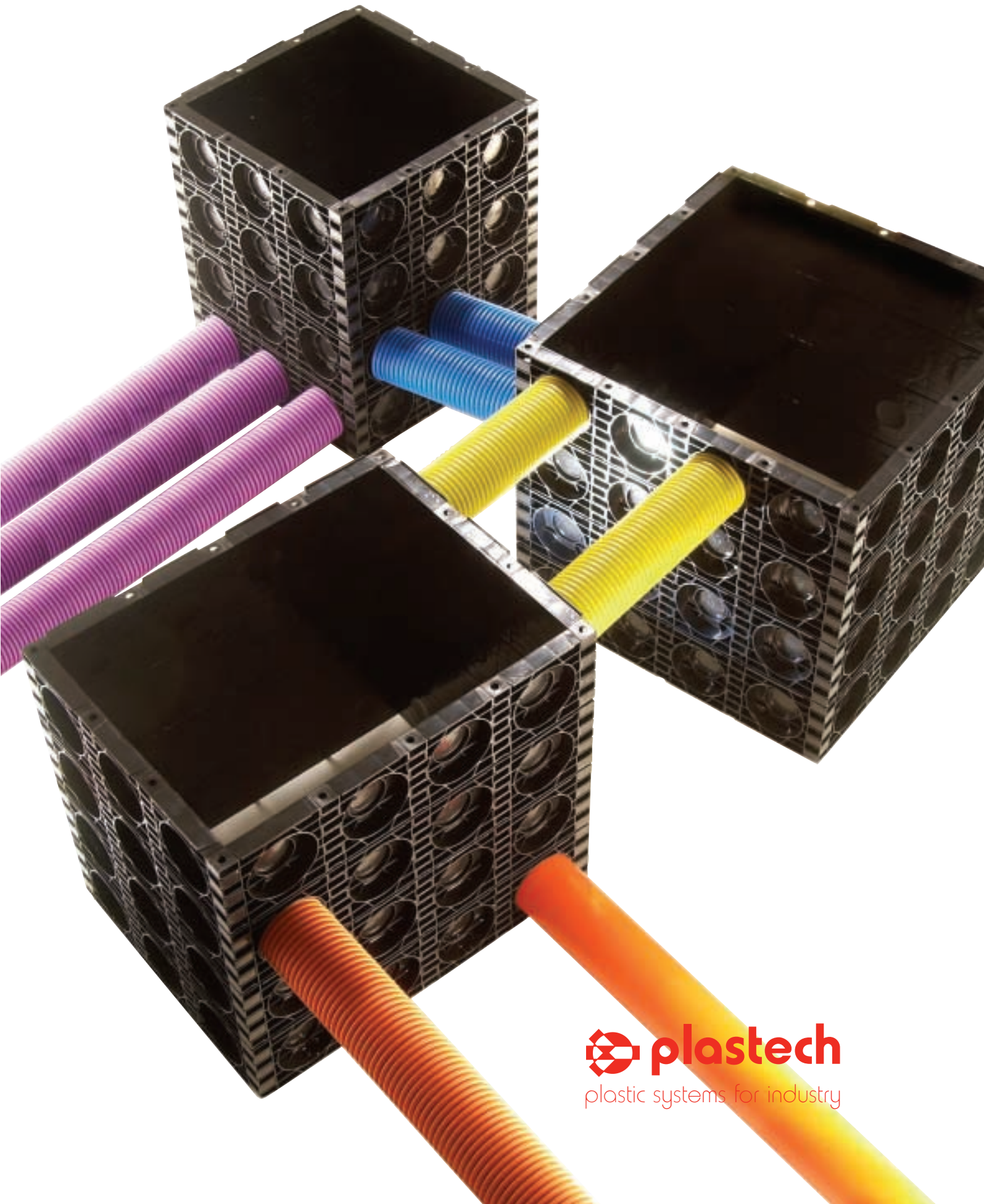
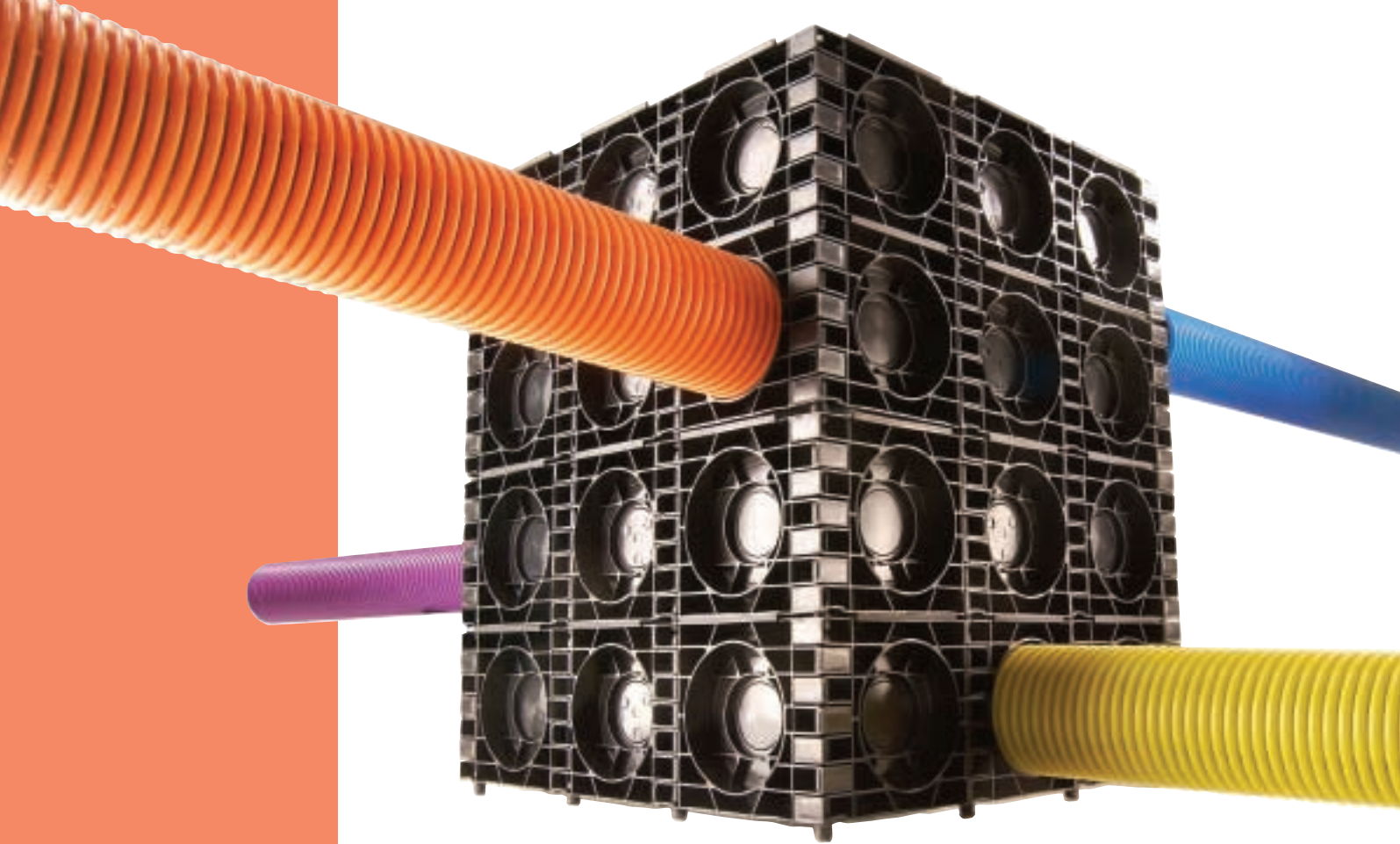


Premier Duct Access Chambers



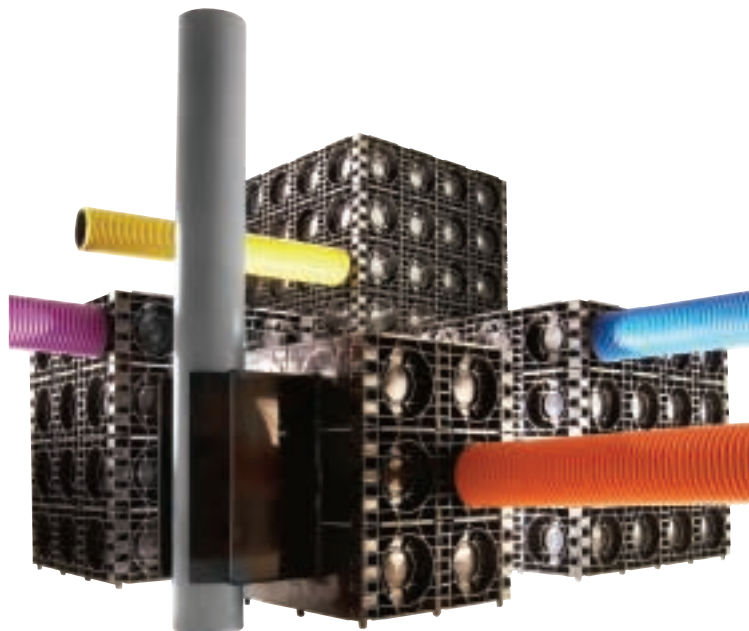


Premier Duct Access Chamber

Plastech is proud to introduce the Premier Duct Access Chamber.

Although it is aimed primarily at the Street Lighting and Traffic Signals industries, it is suitable for most applications where a duct access chamber is required.

The robust design means that the boxes are not prone to deformation whilst being backfilled with concrete, unlike some other systems on the market, giving the contractor and client peace of mind.



premier



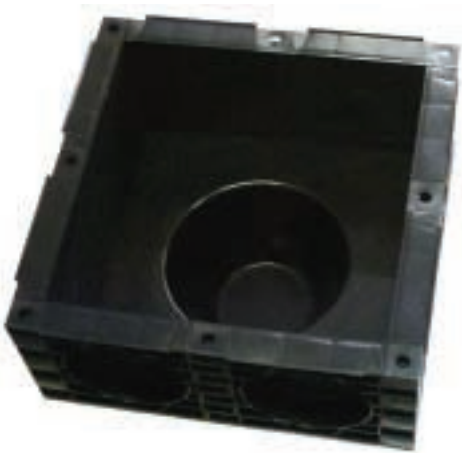
Contractor Benefits

The benefits to the contractor are:

- Robust Design
- Speed and ease of installation
- Light weight sections
- 150mm deep sections for greater flexibility and less waste
- Pre-Trepanned guide holes for easy access
- Interlocking sections
- Pre-Formed base units
- Cost competitive against traditional products
- Can be installed with or without concrete surround



Pre-Formed base units



benefits



Recommended Installation Guide

The 'Premier' Chamber should be bedded on a base of 100mm thick C20 drymix concrete and the base be chamfered to obtain a natural soakaway outlet. Alternatively use a 'Premier' pre-formed base set in no-fines semi porous concrete mix.

The sides can be backfilled with dug material, granular material or concrete.

Specification

The duct inspection chamber shall be manufactured from 32mm thick, high density polyethylene and have a smooth inner wall with reinforcing ribs on the external wall for extra rigidity.

They shall be capable of withstanding a 12.5 tonne wheel load, without the need for structural concrete surround.

They shall be manufactured from separate, interlocking sections and have the capability to be assembled or disassembled on site without the need for sawing or specialist equipment.

They shall come complete with pre-formed knock out sections to accommodate duct sizes of 50mm, 66mm and 110mm outside diameters.

The chambers shall be supplied with a pre-formed GRP base unit for ease and speed of installation which should be bedded in a no-fines, semi porous, concrete mix to allow any ground water to flow away.

The chambers shall be supplied with a 150mm long, pre-formed raising pin where required, to enable the contractor to lift and tilt the frame as required.

The sections shall be 150mm overall depth and be supplied with a locating flange to the top section for ease of assembly and shall be available in a range of standard sizes, as follows.

The Premier Duct Access Chambers Range

Model Number	Clear Opening	Section Depth	Load Rating
Premier P3030	300 x 300	150	B125
Premier P3045	300 x 450	150	B125
Premier P4545	450 x 450	150	B125
Premier P4560	450 x 600	150	B125
Premier P6060	600 x 600	150	B125
Premier P4590	450 x 900	150	B125
Premier P6090	600 x 900	150	B125

All dimensions in mm. Clear Opening measurements are width x length.

Other sizes can be manufactured at short notice.

The duct inspection chamber lid shall be manufactured from high strength, polyester composite material and shall conform to BSEN 124, 12.5 tonne wheel loading.

The lid shall locate into a 2.5mm thick, lockable, galvanised frame, with a 100mm internal flange which allows for lift and tilt adjustment and a 70mm external flange to the top section.



Plastech Limited, Park Industrial Estate, Liverpool Road, Ashton-in-Makerfield, Wigan WN4 0YU

Tel: 01942 717110 Fax: 01942 717115 Email: info@plastech-stakka.co.uk Website: www.plastech-stakka.co.uk.